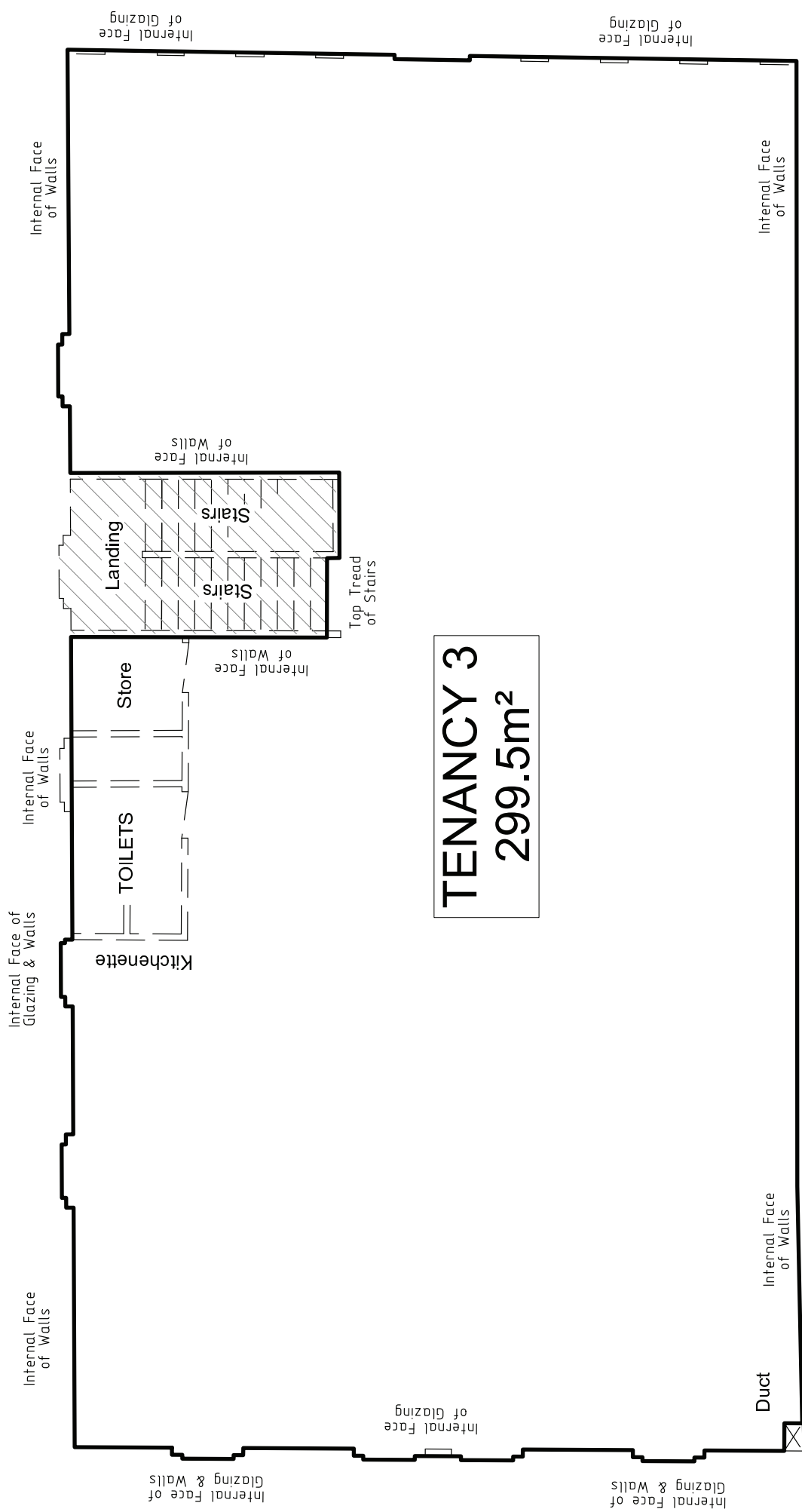


GORE STREET



TENANCY 3
299.5m²

SECOND LEVEL

DATE MAY 2021	SURVEYED CDP
SCALE N.T.S (A3)	DRAWN CDP

NOTES:
1) The method used to determine the Rentable Areas is that generally recommended in the Property Council & Property Institute of New Zealand Guide for the measurements of Rentable Areas (June 2013 Revision), Method 1 where applicable and appropriate. Standard facilities such as the stairwell are excluded in the rentable areas.
2) To allow detail to be shown with clarity, the scale has been distorted.

PLAN TITLE:
**RENTABLE AREAS AT
9 GORE STREET
AUCKLAND CITY**

PREPARED FOR:
**EVOLUTION
TRUSTEE
LIMITED**



FILE
8553

DRAWING No.
4
OF 4 DRAWINGS