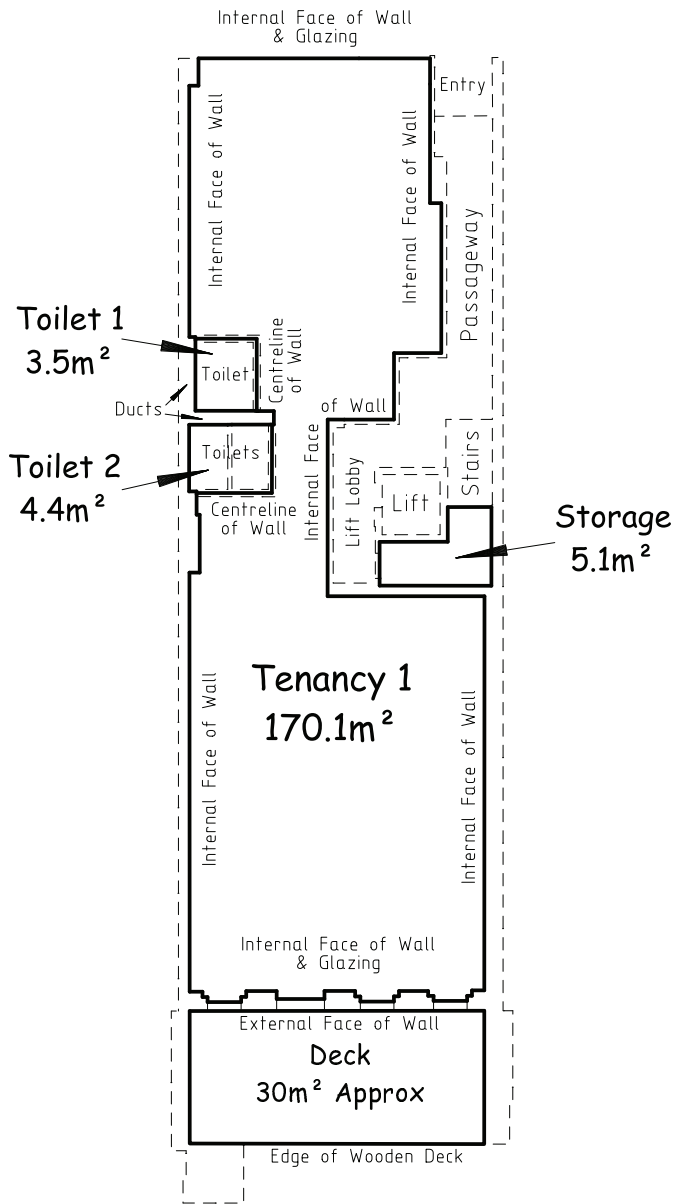
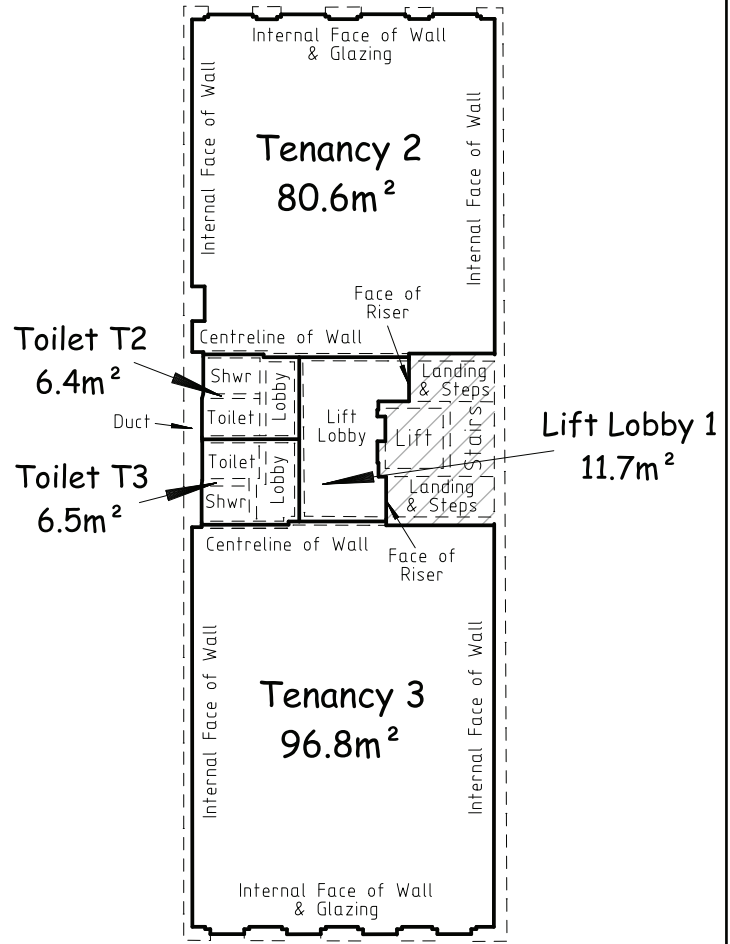


CUSTOMS STREET EAST



**GROUND FLOOR PLAN**


CUSTOMS STREET EAST



**FIRST FLOOR PLAN**

| Tenancy 2    |  | Tenancy 3    |  |
|--------------|--|--------------|--|
| Tenancy      | = 80.6m <sup>2</sup>                                 | Tenancy      | = 96.8m <sup>2</sup>                                 |
| Lift Lobby 1 | = 5.3m <sup>2</sup><br><small>pro rata share</small> | Lift Lobby 1 | = 6.4m <sup>2</sup><br><small>pro rata share</small> |
| Toilet T2    | = 6.4m <sup>2</sup>                                  | Toilet T3    | = 6.4m <sup>2</sup>                                  |
| <b>Total</b> | <b>= 92.3m<sup>2</sup></b>                           | <b>Total</b> | <b>= 109.6m<sup>2</sup></b>                          |

NOTES:

- The rentable areas have been determined in general accordance with the Property Council and Property Institute of New Zealand's guide for the measurement of rentable areas (June 2013 revision) methods 1 & 2 where applicable and appropriate.
- To allow detail to be shown with clarity, the scale has been distorted.
- Areas shown thus:  have been excluded from rentable areas.

**RENTABLE AREAS  
57 CUSTOMS STREET EAST  
AUCKLAND CITY**

PREPARED FOR

Fairfield  
Investment Trust

DATE February 2020

SCALE (A3)  
Not to Scale

SURVEYED MvK  
DRAWN MvK



Yeomans Survey Solutions Limited  
Unit 1C Level 1 29 Karaka St Newton  
PO Box 71 84 Auckland

p: (09) 309 0860  
e: info@yeomansurvey.co.nz

|               |               |
|---------------|---------------|
| FILE          | Drawing       |
| <b>8330/B</b> | <b>1</b>      |
|               | of 2 Drawings |